



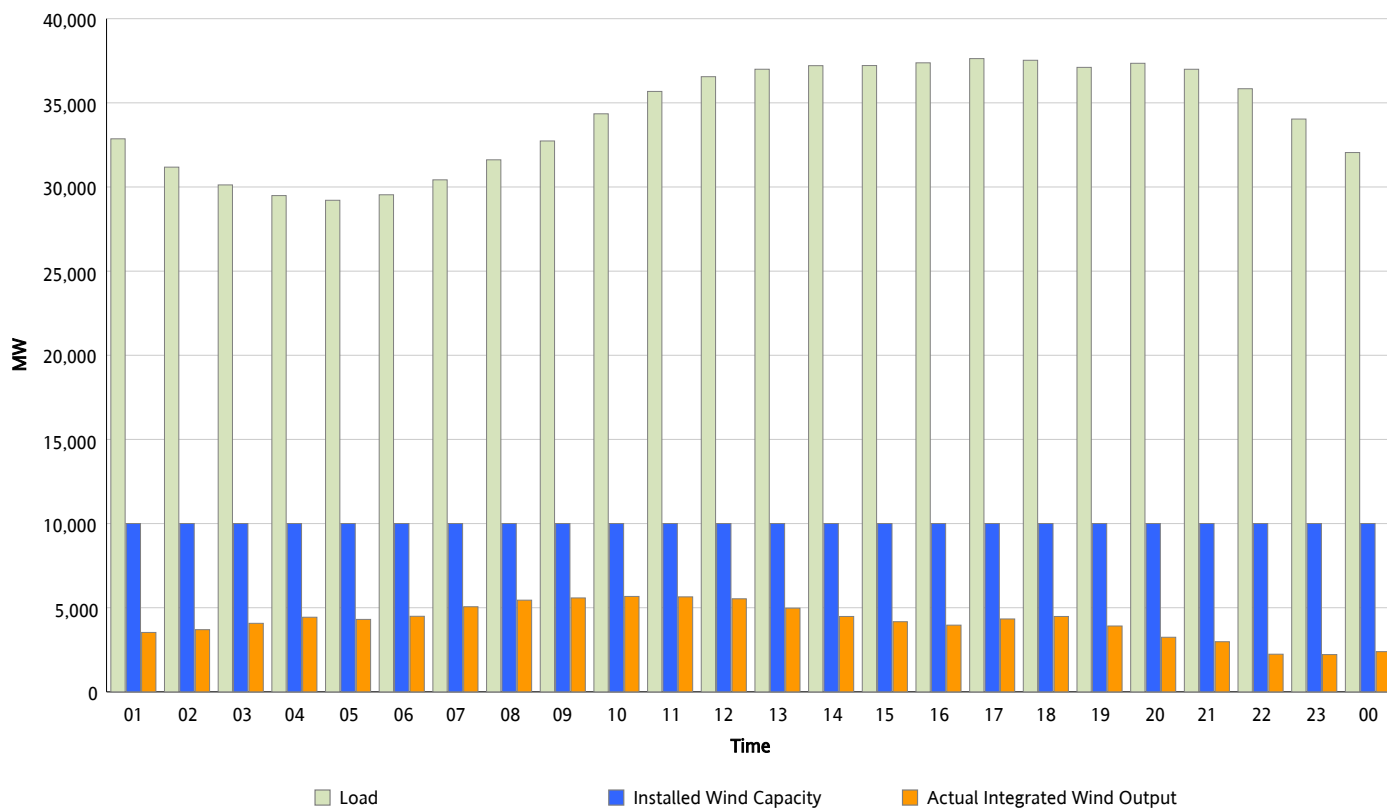
ERCOT Grid Operations

Wind Integration Report : 09/29/2012

Peak Load	37,630 MW
Load Peak Hour (HE)	17
Wind Over Peak	4,333 MW
Wind Record 06/19/12	8,368 MW
Max Wind Value*	5,773 MW
Wind Peak Time	09:20
Wind Integration %	16.89 %

Hourly Average Actual Load vs. Actual Wind Output

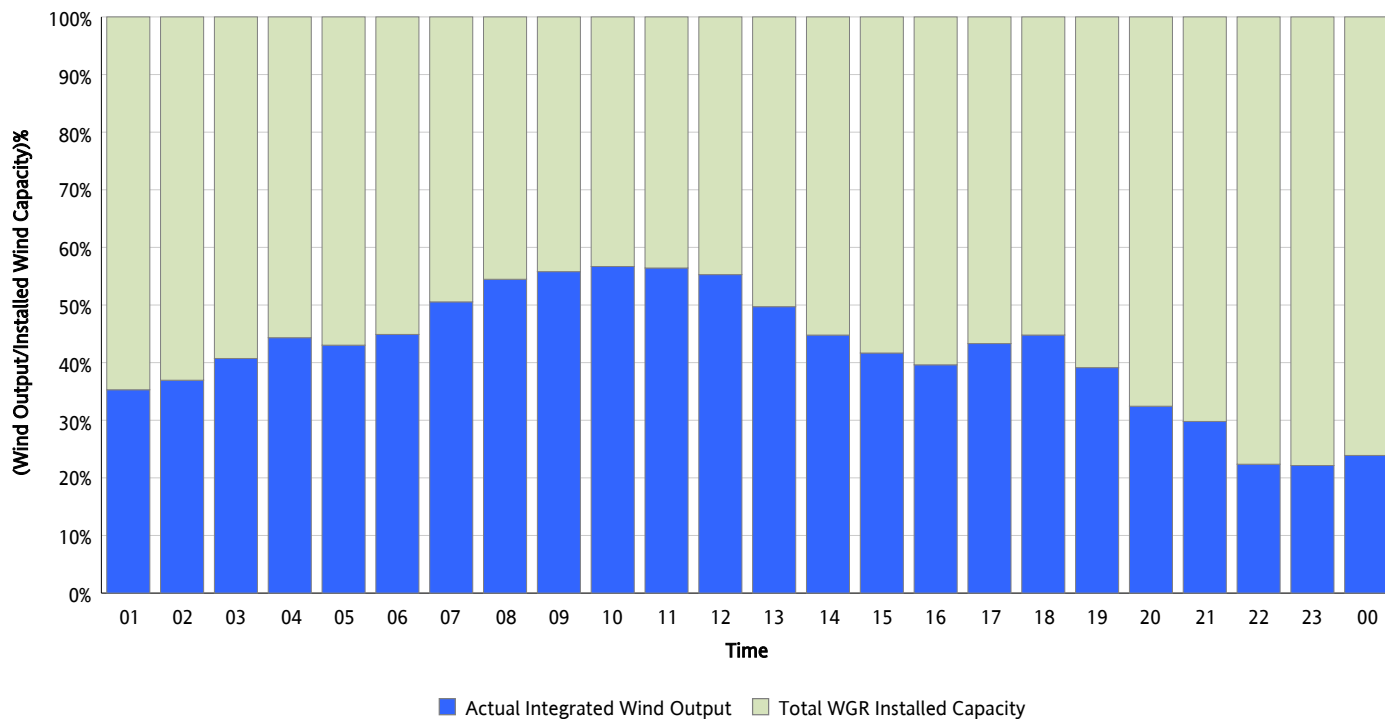
09/29/2012



* Wind Record and Wind Max represent instantaneous values and the rest of the values are integrated over the hour

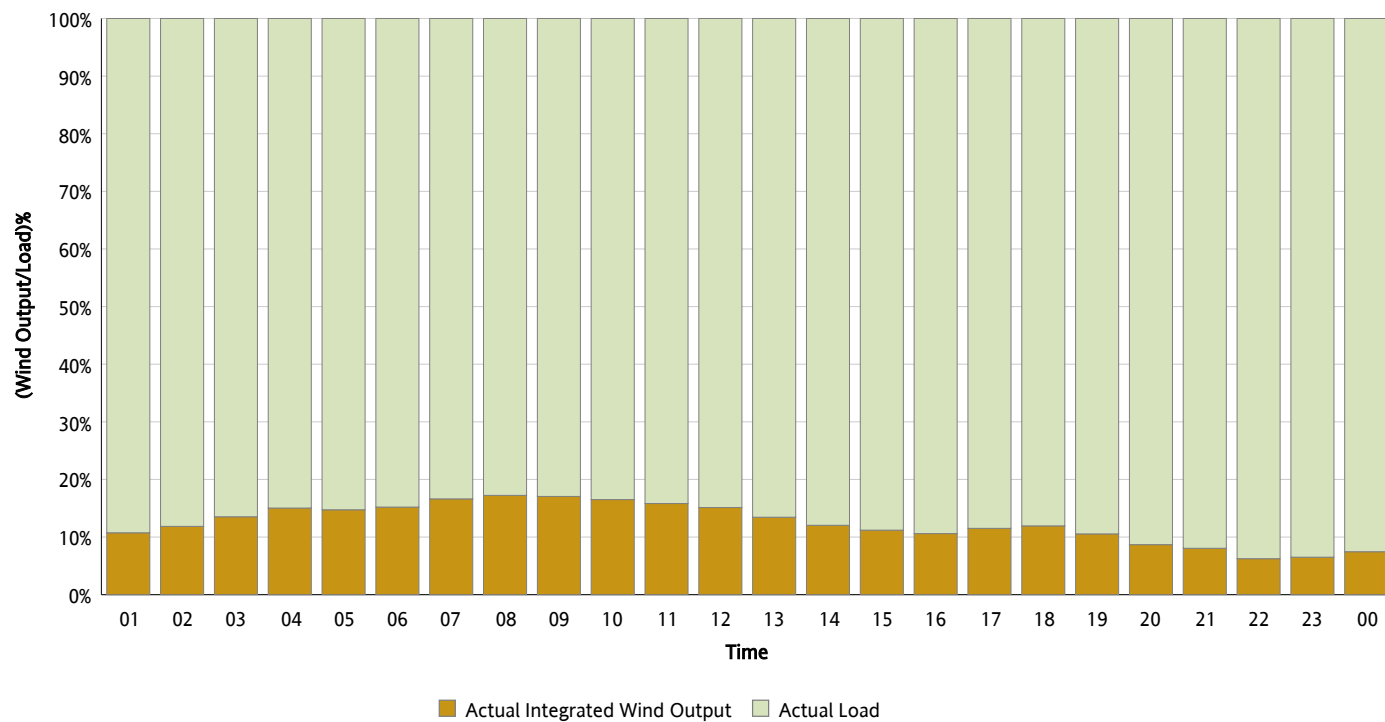
Actual Wind Output as a Percentage of the Total Installed Wind Capacity

09/29/2012



Actual Wind Output as a Percentage of the ERCOT Load

09/29/2012



ERCOT Load vs. Actual Wind Output

09/22/2012 - 09/29/2012

